



**VALARTE**  
THE ART OF LIVING



[valartepv.com](http://valartepv.com)



Comfort, convenience, innovative design and cutting-edge technology for those with an appreciation for the finer things in life.

Experience the latest ascension in architecture excellence and contemporary design at Valarte - renowned developer GRUPO GOVA's newest class of luxury residential development for viable urban living. The groundbreaking tower with its verdant surroundings is a purposeful balance of function and elegance within the vibrant, up-and-coming community of Versailles and Fluvial, in the heart of Puerto Vallarta.

Valarte, Grupo Gova's exciting *new 95-unit residential development* boasts a variety of contemporary home plans ranging from loft-style, studio, and one-to-three-bedroom units, with varying garden, mountain, city, or ocean views. The numerous communal amenities are seamlessly integrated into the building's multiple tiers, focusing on social spaces for families and individuals alike.







## Summary of features:

Valarte's modern design provides an utterly unique investment opportunity in one of Puerto Vallarta's fastest-growing neighborhoods.

Valarte's Unique Lifestyle Amenities include:

- Oversized Infinity-Edge Pool & Lounge Area
- Fitness Center and Multi-Purpose Room
- Co-working and conference Facilities
- 14-Seat Movie Theater
- Outdoor Recreation Area and Dog Park
- Art Gallery and Commercial Spaces
- Rooftop Multi-Purpose Center
- Exhibition Area

Valarte's iconic design, abundant, outdoor green spaces, and generous amenities have generated an incredible response from buyers and investors alike and will ensure units sell quickly. Reserve your unit today to be part of this exciting new community.







## Amenities

Valarte's unique design is a refreshing response to today's urban living combining cutting-edge aesthetic, innovative technology, and tiered construction to deliver an integrated living experience.

### General building features

- Family game room and lounge
- Two family park areas
- Pet Area
- Exhibition area
- Co-Working Center with conference rooms
- 14-seating Cinema Room
- Large infinity edge lap pool
- Open air & covered lounge areas
- Multiple sunning areas
- Fitness Center
- Rooftop multi-purpose center
- Outdoor rooftop terrace with 360° views
- Ocean, City and Mountain views – according to unit
- Two Elevators
- Casilleros para almacenaje (disponibilidad limitada).

### Other features include:

- Controlled access reception
- Double-height lobby
- CCTV in common areas
- Natural stone accents throughout
- Extensive landscaping and green spaces throughout
- Water features
- Snack area
- Air-Conditioned bar and lounge
- Common restrooms
- Covered & uncovered parking
- Storage lockers
- General
- Porcelain/Ceramic tiles throughout
- Cabinets (according to the design)
- Mini-split air conditioning unit(s)
- Direct telephone line outlets
- Generous build outs
- Easy movement PVC or high quality aluminum window frame with 6mm glass
- Pre-wired for television
- Ceiling fan(s)
- Direct and Indirect lighting according to design







## Residence Design Features

### Cocina

- Bullet one
- Bullet two
- Bullet three
- Bullet Four
- Bullet Five

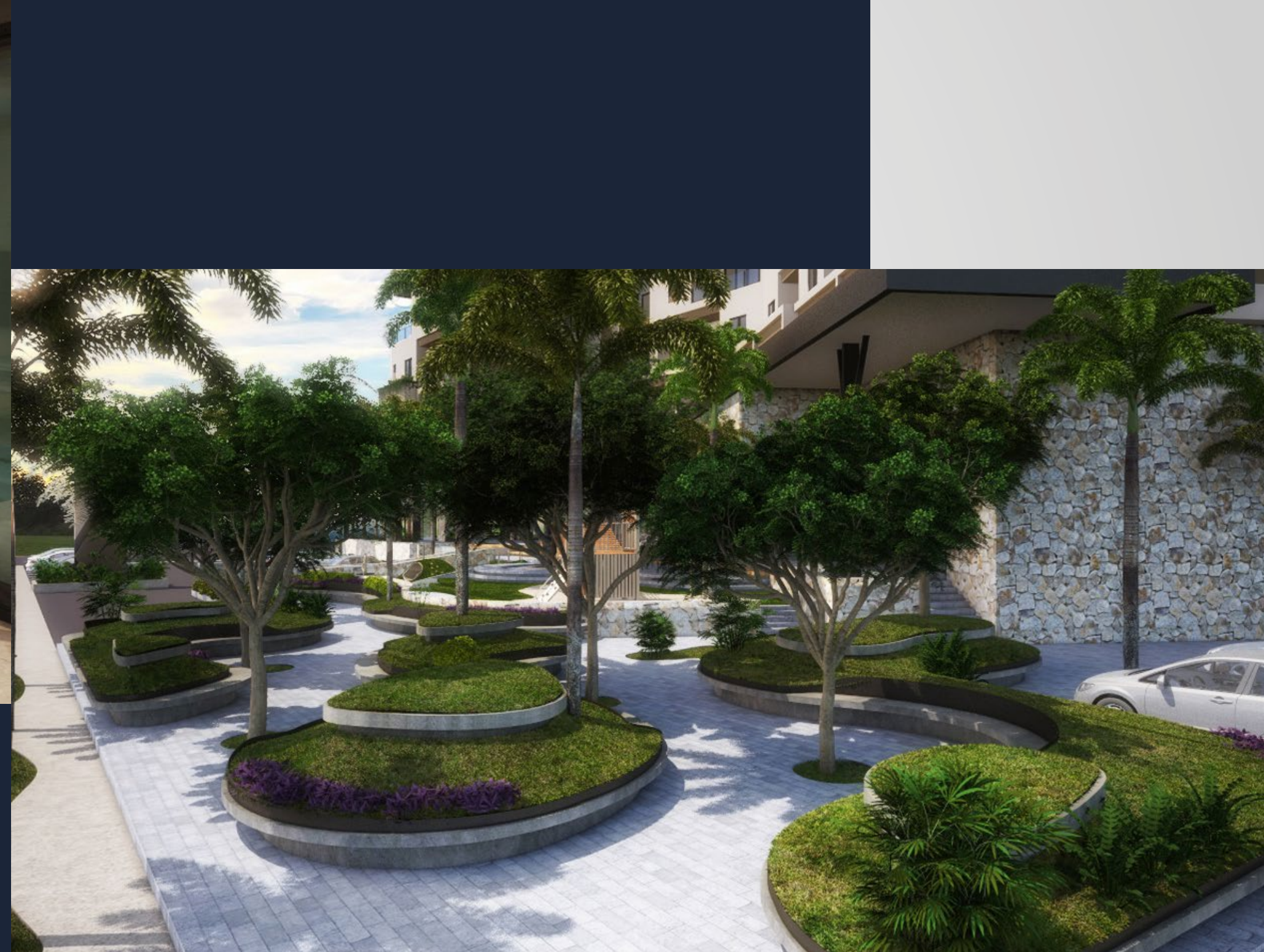
### Baño

- Bullet one
- Bullet two
- Bullet three
- Bullet Four
- Bullet Five

### Terraza

- Bullet one
- Bullet two
- Bullet three
- Bullet Four
- Bullet Five







Contact us today to learn about our incredible preconstruction opportunities.

**Taniel Chemsian** [taniel@timothyrealestategroup.com](mailto:taniel@timothyrealestategroup.com),  
**Mateo Jimenez** [matt@timothyrealestategroup.com](mailto:matt@timothyrealestategroup.com) &  
**Estefanía Perez** [estefania@timothyrealestategroup.com](mailto:estefania@timothyrealestategroup.com)

Local: +52 (322) 223.5300

US/CND: +1 (323) 798.8893

[valartepv.com](http://valartepv.com)

Las representaciones, dibujos e imágenes de marketing de los departamentos, fachada y áreas comunes son aproximadas y solo conceptuales y son solo de referencia; el desarrollador se reserva expresamente el derecho de realizar modificaciones sin previo aviso. Los detalles finales del desarrollo pueden variar una vez terminado, incluidos, pero no limitados a las dimensiones y los metros cuadrados de los departamentos, los cambios y/o modificaciones estructurales y mecánicos, el paisajismo, las amenidades y los materiales de construcción, por nombrar algunos. El desarrollador se reserva expresamente el derecho de realizar modificaciones, revisiones y los cambios que considere deseables a su única y absoluta discreción y sin previo aviso. Consulta tu Acuerdo de los artículos incluidos con la venta del departamento. No basarse ni confiar en las vistas estimadas representadas como la vista real desde una unidad en particular o desde las áreas comunes. Algunas fotografías de marketing pueden ser fotografías de archivo utilizadas para representar el estilo de vida sugerido en lugar de cualquiera que pueda existir. Los precios, planos, interpretación arquitectónica y especificaciones están sujetos a cambios sin previo aviso.

TIMOTHY  
REAL ESTATE GROUP

 GRUPO GOVA